



Ashford Park Progress Report

Briefing Paper Update

Site: Ashford Park

Report Completed by: Gary Edwards
Kapiti Quarries and Crushing Manager
Winstone Aggregates

Date of Review: 15th May 2024

Strategic Objective: Update to Community Liaison Group

Briefing Paper for: Update

Contents

- 1.0 Actions from last CLG Meeting
- 2.0 Complaints
- 3.0 Water Quality Testing
- 4.0 Extraction
- 5.0 Planned work
- 6.0 Rehab and Maintenance

Ashford Park Progress Report

1.0 Actions from last CLG Meeting

1.1

2.0 Complaints

2.1 Nil Complaints

3.0 Water Quality Testing

3.1 Appendix A attached

Link to site – <https://winstoneaggregates.co.nz/locations/otaki-quarry/ashford-park/>

4.0 Extraction

Current Extraction We are still extracting material in stage 2. This will continue for the next couple months before we move in to stage 3.

Over the period 11th November 2023 to 10th May 2024, 39,035m³ of gravel was extracted from Ashford Park.

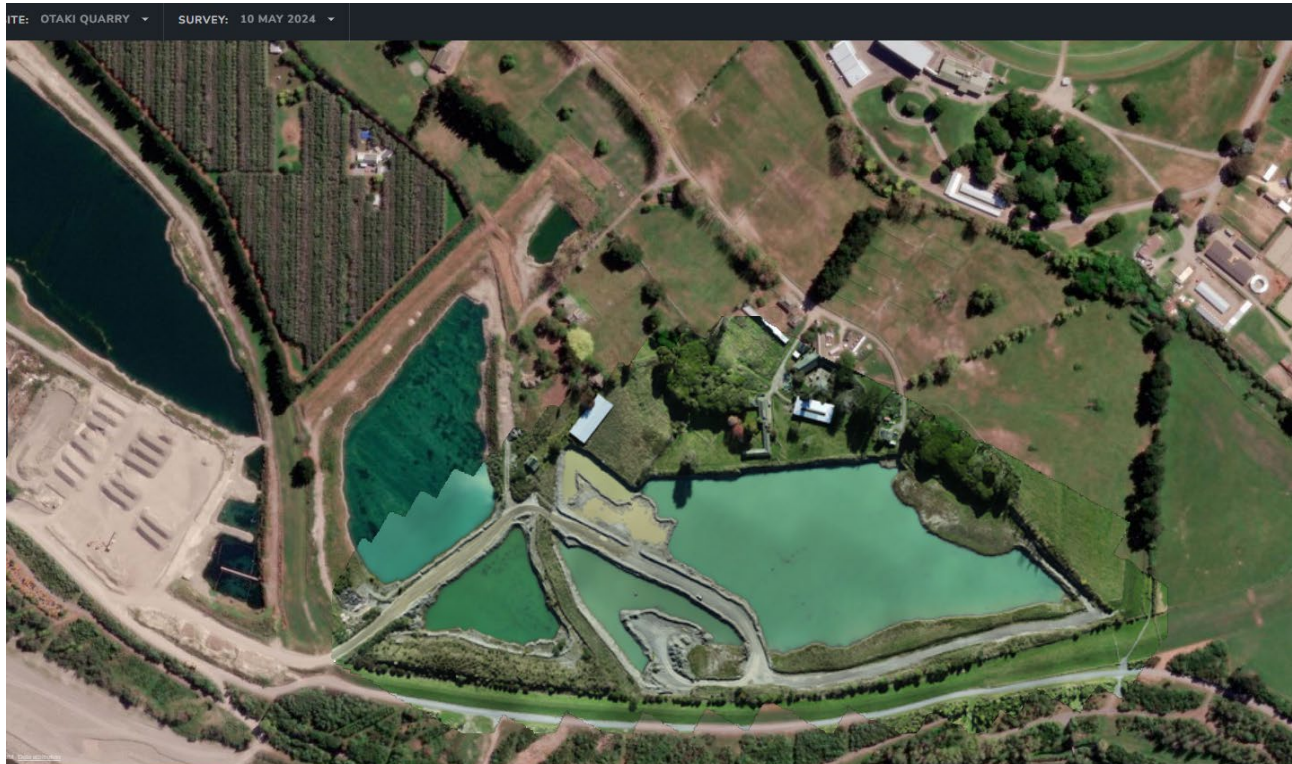
We have stockpiled Surge material in Mobile Crushing area ready for crushing GAP materials for forecasted projects.

Ballast supply has started to ramp up with increased trains into the quarry.

Concrete Sales have slowed over the past few months because of high interest rates in the housing market and cancelled projects.

Current Stripping/Extraction area





5.0 Planned work

Stripping will begin June/July in stage 3.

Extraction in Stage 3 will start July/August depending on sales.



6.0 Rehab and Maintenance

The Trees and Planting in Stage 2 is progressing well, Natural Habitats are maintaining these areas as part of their contract.

Landcare have completed the first Mow around the first part of the Native Island.



