



# Ashford Park Progress Report

## Briefing Paper Update

---

**Site:** Ashford Park

**Report Completed by:** Gary Edwards  
Kapiti Quarries and Crushing Manager  
Winstone Aggregates

**Date of Review:** 10<sup>th</sup> May 2023

**Strategic Objective:** Update to Community Liaison Group

**Briefing Paper for:** Update

---

# Contents

- 1.0    Actions from last CLG Meeting
- 2.0    Complaints
- 3.0    Water Quality Testing
- 4.0    Extraction
- 5.0    Planned work
- 6.0    Rehab and Maintenance

# Ashford Park Progress Report

## 1.0 Actions from last CLG Meeting

### 1.1

## 2.0 Complaints

- 2.1 Duck shooters on the extraction areas, I arrived on site (Saturday 6<sup>th</sup> May @11am) and no one was in Ashford Park. Spoke to Carolyn and reminded her that no one has permission to use Ashford Park as a recreational area.

## 3.0 Water Quality Testing

- 3.1 Appendix A attached  
Link to site – <https://winstoneaggregates.co.nz/locations/otaki-quarry/ashford-park/>

## 4.0 Extraction

**Current Extraction** We are still extracting material in stage 2. This will continue well into next year before we move in to stage 3.

Over the period 1<sup>st</sup> Dec 2022 – 9<sup>th</sup> May 2023, 14,658m<sup>3</sup> of gravel was extracted from Ashford Park.

Extraction from Ashford has decreased over the last couple months due to the two projects coming to an end (PP20 / TG). We have been crushing a lot of GAP material for several contractors for subdivisions and improvements to the roading network in the Region.

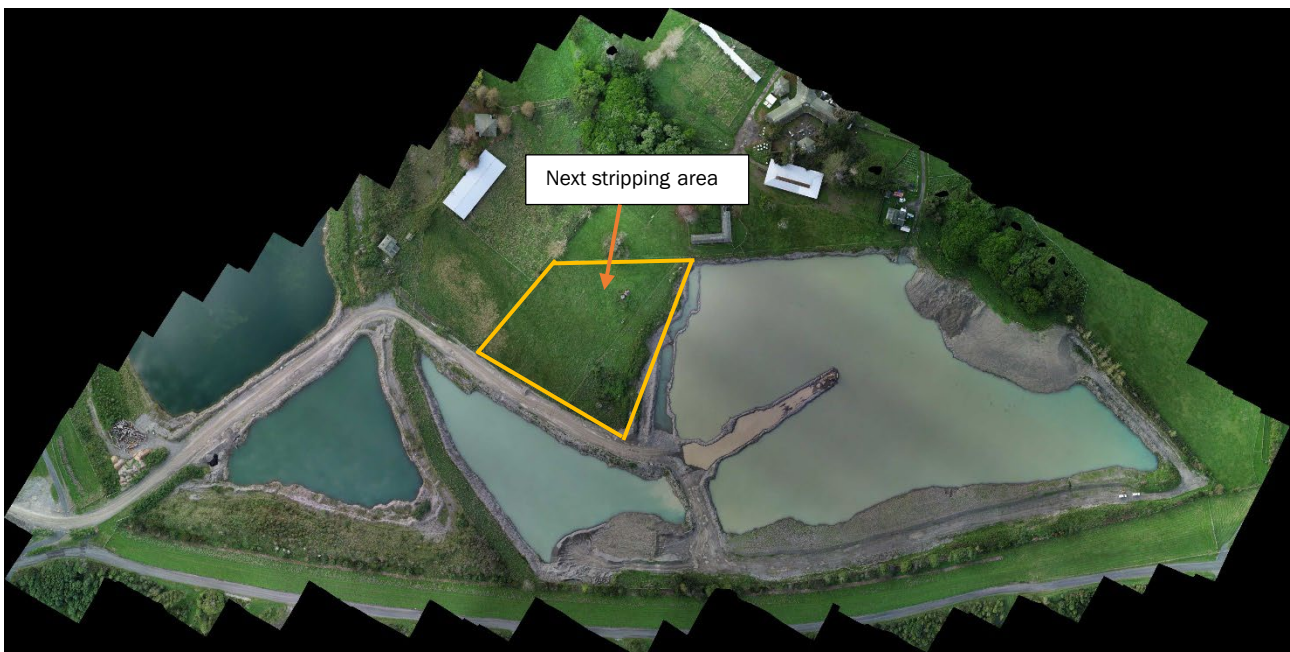
Ballast supply has increased due to the recent flooding in the Hawkes Bay Region.

## Current Extraction area



## 5.0 Planned work

Planning for building the northern Noise bund in stage 3 has begun, a new fence will be installed to separate the horses in Ashford Park from the work area. This work will take approx 2 months to complete once started (dependant on weather).





## . 6.0 Rehab and Maintenance

Planting of part of the eastern side of Ashford Park was completed in April, over 4000 native trees were planted. This will now be maintained for the next 4 years by the contractor.



Area around first Island is starting to take shape, this will not be able to be finished until we are in Stage 4

